

Cliftdale Square Overlay District (CSOD)

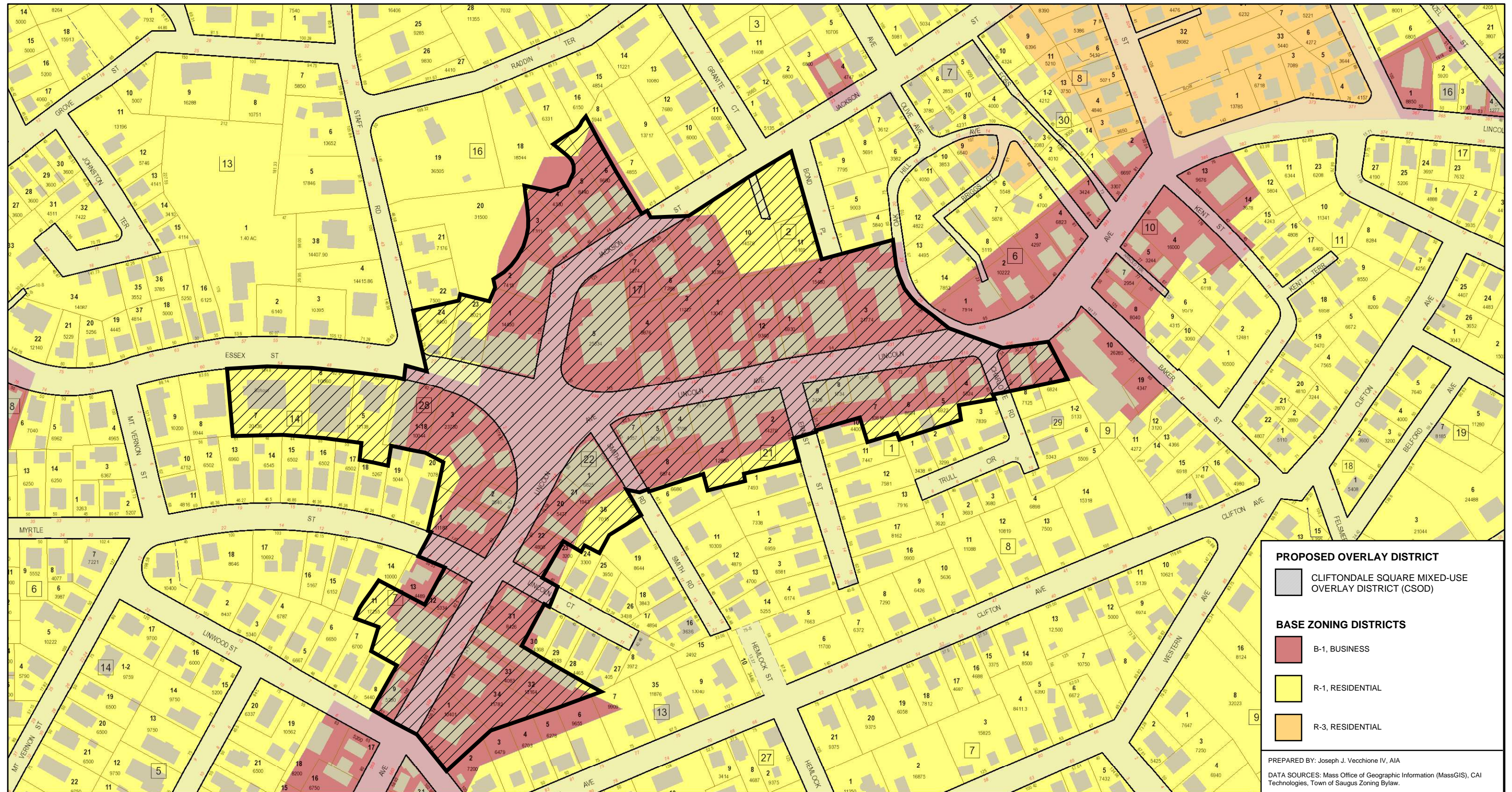
Saugus, MA

1 inch = 175 Feet



March 11, 2023

www.cai-tech.com



PROPOSED OVERLAY DISTRICT

- CLIFTONDALE SQUARE MIXED-USE OVERLAY DISTRICT (CSOD)

BASE ZONING DISTRICTS

- B-1, BUSINESS
- R-1, RESIDENTIAL
- R-3, RESIDENTIAL

PREPARED BY: Joseph J. Vecchione IV, AIA
 DATA SOURCES: Mass Office of Geographic Information (MassGIS), CAI Technologies, Town of Saugus Zoning Bylaw.

Data shown on this map is provided for planning and informational purposes only. The municipality and CAI Technologies are not responsible for any use for other purposes or misuse or misrepresentation of this map.